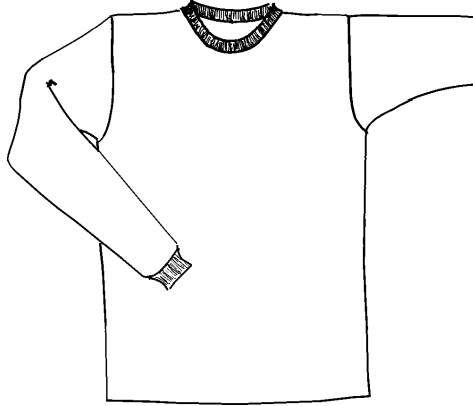


**5586**  
**Hanes™ Tagless**  
**100% Cotton Long Sleeve T-Shirt.**



**Descriptions**

- 6.1-ounce, 100% cotton
  - Tagless for comfort
- Double-needle coverseamed crewneck
  - Taped shoulder-to-shoulder
    - Ribbed knit cuffs
- Preshrunk to minimize shrinkage
- Hanes EasyColor program, [haneseasycolor.com](http://haneseasycolor.com)

**Finished Garment Measurements**

<b>Size</b>	<b>S</b>	<b>M</b>	<b>L</b>	<b>XL</b>	<b>2XL</b>	<b>3XL</b>
Width	18	20	22	24	26	28
Front body length from high point of shoulder	28	29	30	31	31.0	32
Sleeve length from shoulder	33.62 5	34.87 5	35.5	36.2 5	37	37.7 5